

CSR ROLE IN SUPPLY CHAIN MANAGEMENT AND ITS IMPLICATIONS WITH THE OUTCOME OF CSR ACTIVITIES AS A MAJOR CONTRIBUTION.

¹Anish Devale , ²Dr. Shabnam Mane Mahat.

¹Research Scholar at Bharti Vidyapeeth (Deemed to be a university),
Pune, India

²Professor & Research Guide at Bharti Vidyapeeth (Deemed to be a university), Pune,
India¹ anishwb220@gmail.com, ² Shabnam.mahat@bhartividyaapeeth.edu

ABSTRACT

The supply chain is key for any distribution network, There is scope for further development that upgrades the business distribution network which helps them for the organized sector and unorganized sector for which the development was helpful where there is huge network management which some lethal way to avoid leakages for the company and to avoid mismanagement which creates a strong network where all parties that are network distributors are being managed professional way and in organized sector which creates a strong arm of network at individual and macroeconomic level. This has led to new developments for overcoming which leads to an increase in the scale of business expansion and makes it more systematic for the development of strong business functioning in increasing business scalability. The larger portion is being taken into consideration which helps for further development which takes into consideration for overall growth into a business occupation for overall growth story which embarks the organization for the company as a whole. This led to business development for structural organization for the company as a whole which makes it more empirical for business expansion process oriented. This lays the foundation which becomes identical for further development of business orientation with the area-wise and zonal distribution of network where the development is on equal options for growth-oriented where the development is to leads infrastructure will be more business orientation of business systematic process and business enactment where with development for further scope of actions with standard business activity with overall growth story of the organization for scalability of the business as whole and standard practice value of the business outcome it helps to maintain the overall dignity of distribution network which creates a strong business value is taken into consideration for business a whole of business organization as whole. This led to strong ethical development for the whole as a whole with rapid industrialization and governing process with business activity for strong process of business as it becomes more friendly and more standard as it becomes which become a variable business for sector structure. This has to be a stronger factor where it becomes an active participant with friendly for further scope of organization which has enhanced GDP growth for domestic and international level where the development creates strong factors for the further development. This led to further growth in the organization framework for equal opportunity of business and smooth functioning work with strong organization growth for the business as a whole which led to smooth further organization calculation development for the random growth development this led to a strong line network

for individual growth actions. This has become more business significant for a society as whole and structural organizations for individual growth business outcomes for large scale business functioning with entire business development at the higher program to lower development program with scale of the business orientation program for overall growth development story for overall growth development management.

Keywords- *Supply Chain Management, Distribution network, CSR activities, Business network distribution, Industrialization model, Export, Import.*

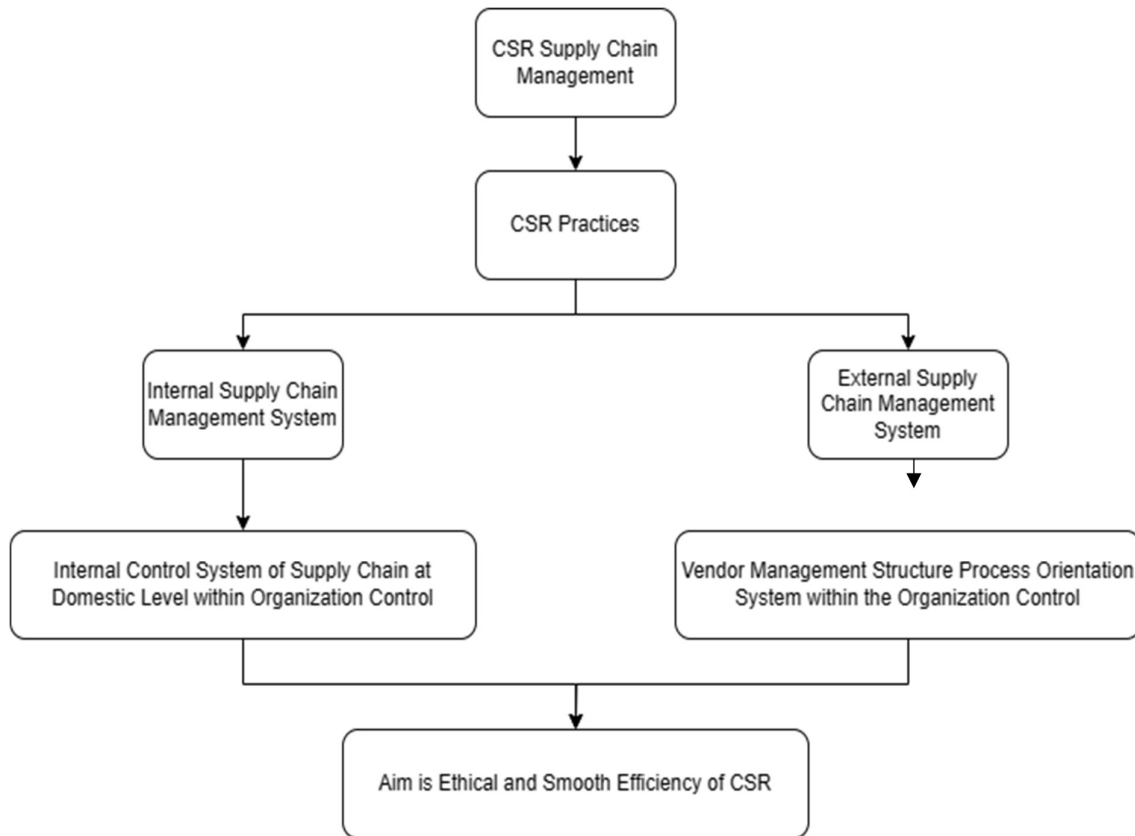
INTRODUCTION

Supply chain- Joining networks with a combination of CSR activities and Business activities.

The supply chain management role is the development of supply growth and increase in development for further increase of further for futuristic business which plays a vital role in business expansion for the growth of the organization as a whole. It helps to develop more economic development for a further rise in economic activities as it helps for an increase to develop a business goal and carry out functioning of work in more efficiently, this leads to more increase and more for qualitative work for the overall development of work as well as rise for the overall scope of development which gives further help to carry out business functions in a smooth way it also helps to earn profit and increase profit which can utilize the profit for corporate social responsibility activities. CSR contribution is to the business activities of the organization which helps for the further scope of development which helps to carry out the business in a more efficient way for social development of the work.

It should be more for efficient work where there is an equal to CSR role where it helps for social development which means further high-level competence for more business-oriented where it leads to increased social development for social infrastructure development with changes in upscaling of development work for business development work with increase development work for selling overall work environment for upscaling work. This leads to an increase in social cause for work on large where it helps for the development of overall growth it leads to social development for overall growth which it helps for overall growth performance for the company's performance. This has had a social impact for the purpose of the act which helps for the further scope of business utility and it results in the overall scope of the development of the work. This leads to the further development of the work. Large development of work is important for further development of the scope of the rise in development This leads to social impact for work where it has the impact of work on business development which gives more emphasis for work and a rise in overall developments for the work where it takes into consideration for overall development of the basis of work. This smoothness of the work helps for the growth of the business and development of the work for the overall growth structure of the work which can be helpful for the business expansion and carrying out the business expansion of work where its parallel it results develop the overall the development for work for large scale of work, it also rises for overall development of business work with the higher priority of the work and rapid development for the work as well as for the

completion of the work progress. This results in the work process and standard development of the work.



CSR Implementation role for CSR activities & Business role in supply chain.

CSR role play vital utility for business growth and business expansion it works through various parameters for which were it will take important role in manufacturing of business activity for overall growth development of organization. Sustainability is the key for overall development in management and supply chain where strong networking with ethicality of management is more important for key progress of the activity. It helps to develop more growth perspective in larger context for overall progress for which higher work element is necessary for overall development of the work. It results in flexible for companies to grow rapidly contribute to the stakeholders which help for which contribute to equal ratio and equal output for security purpose equally. This enhances the quality time output for overall social and empirical evidence which is required equally in overall social development of the company managing credit worthiness plays important role in smooth functioning for overall social development of the nation buyer and equally contribution to higher end goal results for work of companies progress in equal proportion. Hence its more necessary to have efficiency in the output work for overall development of the things. These leads to equal distribution where sales of marketing team are equally distributed with equal work analysis for social impact of the work in large and middle scale of the work.

This creates huge demand for the networking of the work which helps to avail the higher size bracket in medium- and long-term goal which makes the utility more powerful orient. This can develop the strategy of higher development characteristics which develop open operation theory for more focus orientation into drastic development pattern. It increases the efficiency of the organization also practical approach with theoretical base for development as well as interference of work where large portion of work is taken into consideration. There is huge demand for work as network distribution goes on increasing which creates vitality is developed for the period time being in source of efficiency as it has high open access for society at large which enables for overall growth performance for the company that helps for futuristic growth and business enabled pattern which has strong effect for social and culture business practices for overall growth performance which creates business impacts for overall development of business.

That cause which has created a social which puts a business in diversification are impacted on social parameters for the development of the nation this results in cultural upscaling, business distribution, output cost efficiency, business control, business methodology management, system control output, overlapping of the work, which helps for overall growth development of nation across the cross border.

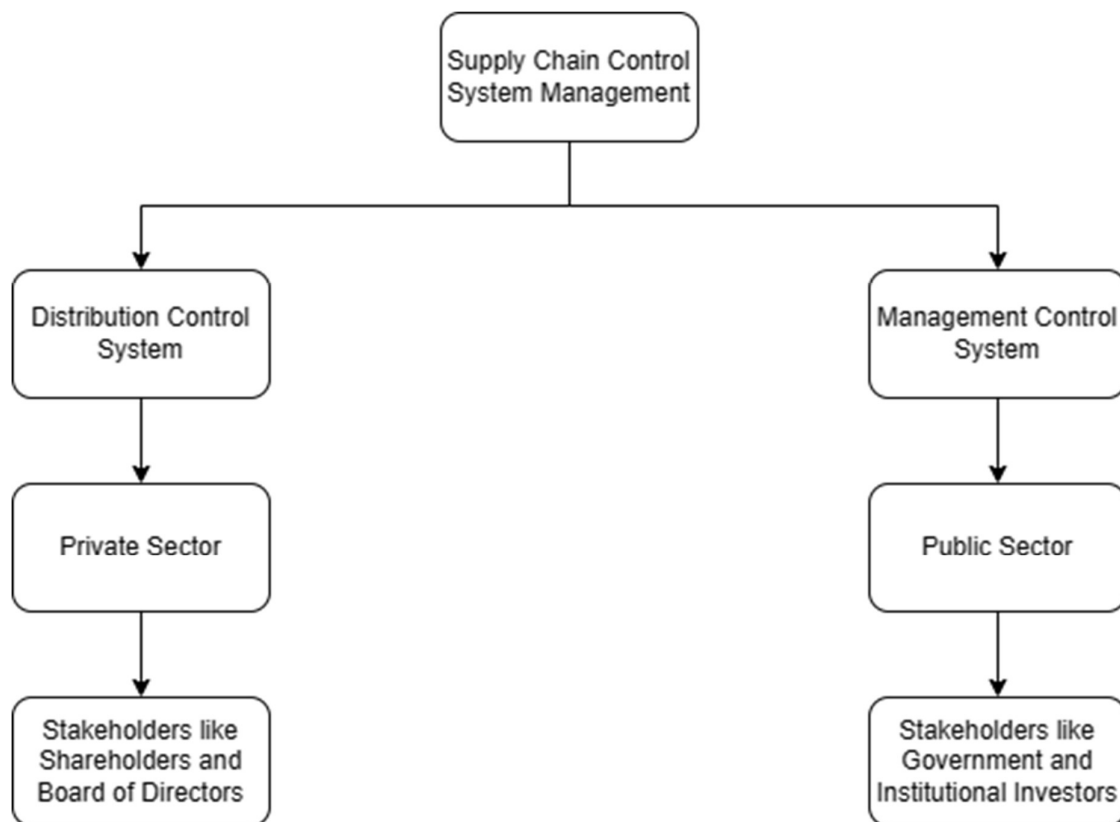
Thus, it's more of predicting the natural work for overall social development implementation of strategy and work atmosphere for maintaining standard CSR role work environment and business development ethical behaviour which is more often reflected in business work which is dominant factor for considering the utility of goods and CSR functionality of the company.

Business Involvement in CSR measures for developing supply chain system

Business development measures is the key features for organization expansion with that business is growth is equally important as more emphasis is given on how the featured of the work is being processed. It measures is to carry out the work in more efficient manner where the focus for overall open development of CSR activities. This lead open access development where majority of work is for right business growth and open business plan, which helps for the further distribution of the work. The more emphasis is on social cause of the development for which its highlighting the business activity as whole for smooth functioning as well as equal. Measuring the proportion of work which help for long term progress at equal and higher opportunities this leads to maximum more options where more flexible options are available and customize CSR options can be avail which can benefit the long-term growth of the company. The supply chain sector as a whole plays vital role where it gives maximum benefit which helps for the movable of efficient output of the work for social and cultural measures, It involves high performance work measures which calculate how the concern measure of work activities are related to the societies and how a remote chain system in country like India a supply chain management and distribution can be developed a strong supply chain facility structure order for the purpose of higher authorities with rapid industrialization for growth oriented story of development of work. With more accessibility and more flexibility these high-net-worth individual firm carries out strong business output labour work for society as a whole purpose to enhance qualitative output performance work ethics. It helps to enhance the material

and business productivity of the output of the business and business structural work which results in different business operations for overall workflow and business orientation increasing the result work put as well as business sales purpose which increases higher input and output ratio for society for the company's input. Supply chain plays vital role in business utility function for smooth and strengthening process which leads to equal distribution of work for individual business and sectorial business for efficiency output work where provision is made for business organization regarding the CSR activities for overall growth development of the company and increasing the business outcome and social outcome for economy as a whole for smooth functioning of business efficiency this results high measure performance and empirical evidence on mixed economy forum for society at large and equal distribution for unorganised sector joining hands in equal proportion of work for large scale of productivity measurement and output efficiency measurement.

This has impacted on large scale functioning as well as overall smooth functioning of the business in equal proportion of the business as it results in business sector harmony for number of years where there is requirement of work and output of work which are aligned to the CSR role measurement of the work.



Supply chain rules for compiling the CSR rules for the governance of CSR rules.

- Business development act for business governing council rules for overall growth story development.

- Open business development work for business growth and business expansion of work.
- Higher growth work association with CSR's main role for joint development.
- Open forum accessibility for individual and social infrastructure development for local and higher authorities of the work.
- Supply chain govern act for overall business activity work progress and business network process.
- Supply chain standards compliance for internal control and statutory control for CSR role governance.
- Professional compliance work for CSR rule act for the overall development of the work.

Industrial sectors and strategies in supply chain management.

- Open market operation with free market smooth development for work consideration.
- Open business work development for overall growth development sector work.
- Increase the work progress compliance for the business activity work process.
- Compliance work strategy process for overall business work process.
- Increase work efficiency and process-oriented progress.
- High process-oriented business for work process for business growth development for large scale of organization of the work.

Further suggestions

It can be easily accessible for the development of business-oriented work developed for the business work process where there is a large scale for the governance of CSR activities, further, CSR is driven by the development of higher authority for the overall development of the work. It helps the overall growth story for the business environment for a work process in smooth process work with the larger scale of work environment for higher authorities work. This has resulted in higher growth development of work for evolving the work process. It's a process of high-scope work hand which is more process-oriented to business growth development. There is a higher growth structure plan for overall growth for which CSR growth plan is structurally overall planned in further scope for work in progress where a large portion which leads to overall this help for overall development of the work which maximizes the output of distribution network and minimizes the cost efficiency of output. This has a

high impact on the process's further development which results reduction in business distribution network cost and also helps to manage CSR governance activity with the large scale of workflow.

CONCLUSION

There has been initial growth development of work for business and business activity which carries out open access development for supply chain, supply chain it has become necessary that the supply chain has to be modernized and it should be more aggressive with the power of development of work where ethics is the pillar of the work. This is more important large resultant is more functional in business operations and a large portion is of more material usage pattern for the society benefit at large. Hence increase in business components is the key tool for the overall growth story and development progress of the work sector which caters to the distribution network chain of the business orientation of the company as a whole. This rise will benefit the overall development activity of the business growth empirically depending on the type of work adopted for it in further work development.

REFERENCES

- Stranieri, Stefanella, et al. "Sustainable development and supply chain coordination: The impact of corporate social responsibility rules in the European Union food industry." *Corporate Social Responsibility and Environmental Management* 26.2 (2019): 481-491.
- Walker, H., & Jones, N. (2012). Sustainable supply chain management across the UK private sector. *Supply Chain Management: An International Journal*, 17(1), 15-28.
- Kholaif, Moustafa Mohamed Nazief Haggag Kotb, and Xiao Ming. "COVID-19's fear uncertainty effect on green supply chain management and sustainability performances: The moderate effect of corporate social responsibility." *Environmental Science and Pollution Research* 30.15 (2023): 42541-42562.
- Hutchins, Margot J., and John W. Sutherland. "An exploration of measures of social sustainability and their application to supply chain decisions." *Journal of cleaner production* 16.15 (2008): 1688-1698.
- Seuring, Stefan. "A review of modelling approaches for sustainable supply chain management." *Decision support systems* 54.4 (2013): 1513-1520.
- Salam, Mohammad Asif. "Retracted article: Corporate social responsibility in purchasing and supply chain." *Journal of Business ethics* 85 (2009): 355-370.
- Tracey, Michael, Jeen-Su Lim, and Mark A. Vonderembse. "The impact of supply-chain management capabilities on business performance." *Supply Chain Management: An International Journal* 10.3 (2005): 179-191.
- Shahid, H.M., Waseem, R., Khan, H., Waseem, F., Hasheem, M.J. and Shi, Y., 2020. Process innovation as a moderator linking sustainable supply chain management with sustainable performance in the manufacturing sector of Pakistan. *Sustainability*, 12(6), p.2303.
- Yawar SA, Seuring S. Management of social issues in supply chains: a literature review exploring social issues, actions and performance outcomes. *Journal of Business Ethics*. 2017 Mar;141(3):621-43.

Roome, Nigel. "Pan-European Approach: Some implications of national agendas for CSR." *Corporate social responsibility across Europe*. Berlin, Heidelberg: Springer Berlin Heidelberg, 2005. 317-333.

Croom, S. R. (2000). The impact of web-based procurement on the management of operating resources supply. *Journal of Supply Chain Management*, 36(4), 4-13.

Nassani, Abdelmohsen A., Hadi Hussain, Elena Condrea, Adriana Grigorescu, Zahid Yousaf, and Mohamed Haffar. "Zero Waste Management: Investigation of Green Technology, the Green Supply Chain, and the Moderating Role of CSR Intentions." *Sustainability* 15, no. 5 (2023): 4169.

Nassani, A.A., Hussain, H., Condrea, E., Grigorescu, A., Yousaf, Z. and Haffar, M., 2023. Zero Waste Management: Investigation of Green Technology, the Green Supply Chain, and the Moderating Role of CSR Intentions. *Sustainability*, 15(5), p.4169.

Green, K. W., Whitten, D., & Inman, R. A. (2008). The impact of logistics performance on organizational performance in a supply chain context. *Supply chain management: An International journal*, 13(4), 317-327.

Stevens, Graham C. "Successful supply-chain management." *Management Decision* 28.8 (1990).