

ADAPTIVE COMMUNICATION STRATEGIES FOR INDUSTRIAL WIRELESS SENSOR NETWORKS: PRIORITY-BASED CHANNEL SCHEDULING AND ROUTE DISCOVERY

Dr V Gnanasekar

Assistant Professor, Department of Electrical and Electronics Engineering, Misrimal Navajee
Munoth Jain Engineering College, Chennai-600097, Tamilnadu, India.

Dr R Kannan

Associate Professor, Department of Electrical and Electronics Engineering, Erode Sengunthar
Engineering College, Erode-638057, Tamilnadu, India.

Abstract- This study explores how Priority-based channel management and Route Finding might be combined to improve communications in Commercial wireless sensor networks (IWSNs). Industrial settings provide particular difficulties that necessitate adaptive techniques for reliable and effective data transfer. Priority-based Channel Scheduling distributes resources according to the importance of the data, avoiding congestion and guaranteeing the prompt delivery of crucial information. In addition, Route Discovery adapts to changing network topologies by dynamically identifying the best routes. The paper evaluates the suitability of popular protocols for communication such as WirelessHART, ISA100.11a, as well as LoRaWAN for various industrial environments through a thorough comparative analysis. Based on factors including data rate, assortment, usage of power, and flexibility, each protocol is carefully examined. The study focuses on the applications of integrated communication techniques across the infrastructure, administration, energy, and industrial industries. The operational effectiveness, safety protocols, and compliance with laws are considerably improved by priority-based stream scheduling as well as route discovery. Recommendations cover stringent security measures, industry-specific modification, and empirical evaluation in real-world circumstances. Future research examines the integration of machine learning, adaptive protocol adaption, and cross-industry adaptability. Standardization and industrial adoption are other goals of the study.

Keywords- message attenuation, changing network, transmissions, shifting network, Identification mechanisms

CHAPTER 1: INTRODUCTION

1.1 Research background

Modern industrial automation relies heavily on industrial wireless networked sensors (IWSNs), which make it possible to monitor and manage physical processes in real-time. However, specialist communication approaches are required due to the particular difficulties presented by the industrial setting [1]. Adaptive algorithms that can deal with issues like interference, message attenuation, and changing network topologies are essential for the efficiency and dependability of IWSNs. Contention over scarce wireless resources as well as concurrent transmissions are issues that are addressed by priority-based route scheduling [2]. This method

guarantees the timely delivery of important information while regulating lower-priority transport by allocating levels of importance to messages of data based on their criticality. Equally important is route discovery, which chooses the best way for data to be transmitted within the network. Traditional routing methods might not function well in dynamic industrial environments, necessitating adaptive alternatives that can adjust their behavior in response to shifting network conditions [3]. In order to increase the dependability and effectiveness of IWSNs in challenging industrial situations, this project intends to create and test novel adaptive communication techniques combining Priority-based Stream Scheduling and cutting-edge Route Identification mechanisms [4]. The suggested approaches have the potential to substantially advance industrial cellular communication's cutting-edge with possible applications in producing goods, controlling processes, and surveillance of infrastructure.

1.2 Research aims and Objectives

Research Aim:

The purpose of the project is to adopt adaptive communication techniques, with a particular emphasis on Priority-based Channeling Scheduling as well as Route Discovery, to improve the effectiveness and dependability of Industrial wireless sensing networks (IWSNs).

Objectives:

- To supply a reliable Priority-based Channel Scheduling system that can dynamically assign channel resources depending on the importance of data packets.
- To look into how Priority-based Channeling Scheduling affects transmission in IWSNs under various network loads as well as interference scenarios in terms of latency, throughput, and dependability.
- To establish and put into use a route discovery system that is adaptable to changing network topologies and external factors.
- To compare the proposed dynamic communication strategies to conventional methods in industrial contexts in order to assess the overall efficiency of the system through thorough simulations as well as real-world trials.

1.3: Research Rationale

Due to the special difficulties presented by industrial contexts, the adoption of adaptive communication techniques in Industrial wireless sensing networks (IWSNs) is essential [5]. The challenges posed by variables like interference, transmission attenuation, and unpredictable network topologies are frequently difficult for standard communication methods to handle. Advanced Routes Discovery Techniques and priority-based Channeling Scheduling present promising ways to improve network performance. These methods seek to guarantee accurate and timely information transmission by assigning levels of importance and proactively optimizing data channels [6]. With the end goal of improving the state-of-the-art in industry wireless networking and permitting more effective and dependable industrial operations and programs, this research aims to solve these important concerns.

CHAPTER 2: LITERATURE REVIEW

2.1: Industrial Wireless Sensor Networks (IWSNs): Challenges and Requirements

Wireless sensor networks face a special set of difficulties in industrial settings. Massive amounts of radiation interference, signal loss caused by equipment and structural features, and the requirement for dependable instantaneous interaction are a few of the issues that cause these difficulties. Strong and durable network solutions are also required due to the severe and dynamic environments present, such as temperature changes, humidity, as well as exposure to dangerous substances [7]. IWSNs also have to deal with strict standards for latency and dependability. For monitoring and regulating operations in industrial settings, rapid and reliable data transmission is essential. Communication breakdowns or delays can result in inefficiencies, higher operating expenses, and occasionally even safety risks [8]. IWSNs need specialized protocols and technology that may adjust to the difficult industrial environment in order to handle these problems.

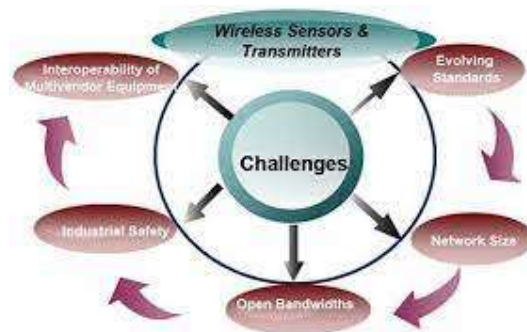


Fig. 2.1.1: Challenges and Requirements in Industrial Wireless Sensor Networks

Advanced modulation methods, error-correcting systems, and adjustable routing algorithms are a few examples. In order to guarantee the durability and stability of the network, it is also critical to implement dependable power management systems and integrate security measures [9]. It is further illustrated how challenging it is to create effective IWSNs by juggling these technological requirements with cost-effectiveness as well as scalability.

2.2: Communication Protocols in Industrial Environments: A Comparative Analysis

In demanding industrial contexts, choosing the right protocols for communication is essential to ensure the dependability and effectiveness of Commercial Wireless Sensor Networks (IWSNs) [10]. As part of this comparative examination, popular industrial communication standards like Wireless HART, ISA100.11a, as well as Lora WAN are examined.

A widely used standard known for its sturdiness and dependability is Wireless HART [11]. It uses a time-synchronized, frequency-hopping broadcasting technique that is excellent for situations with a lot of interference.

ADAPTIVE COMMUNICATION STRATEGIES FOR INDUSTRIAL WIRELESS SENSOR NETWORKS:
PRIORITY-BASED CHANNEL SCHEDULING AND ROUTE DISCOVERY

The open standard ISA100.11a makes use of the IEEE 802.15.4e protocol for low-power connectivity [12]. It specializes in dynamic contexts and is famous for supporting topologies with meshes and multi-hop connectivity.

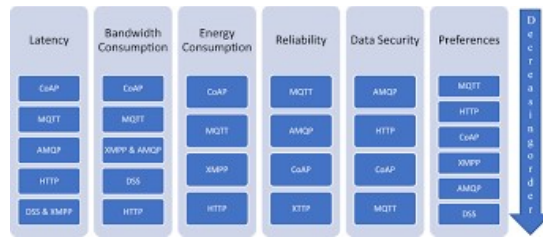


Fig. 2.2.1: Communication Protocols in Industrial Environments

With its far-reaching communication capacity, Lora WAN, and a low-power, wide-area networking protocol, is appropriate for applications utilizing dispersed sensors across huge areas. Its usefulness in settings with severe interference, however, necessitates careful thought [13].

Based on variables like data percentage, range, electrical consumption, as well as adaptability to changing industrial settings, this analysis analyzes these protocols severely [14]. This study attempts to direct the selection among communication protocols customized to certain industrial contexts by analyzing their strengths and limitations, thereby improving the functionality of IWSNs.

2.3: Priority-based Channel Scheduling Techniques: State-of-the-Art and Comparative Study

The scheduling of channels based on priorities is a crucial component of Industrial Wireless Sensing Networks' (IWSNs') communication optimization [15]. This study offers a thorough examination of the most cutting-edge methods now available in this field with the goal of improving the effectiveness and dependability of data transmission in industrial settings [16]. Time-Division Dual Access (TDMA), Frequency-Division Numerous Access (FDMA), and Code-Division Many Access (CDMA) are only a few examples of the priority-based scheduling methods covered in the study [17]. Each strategy is carefully evaluated in terms of how well it fits IWSNs, taking into account things like channel use, interference mitigation measures, and scalability.

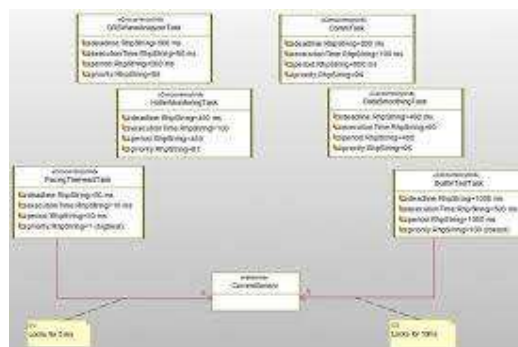


Fig. 2.3.1: Priority-based Channel Scheduling Techniques

Additionally, this study compares different approaches, examining how well they function under various network circumstances and traffic levels [18]. This research intends to provide useful insights for choosing the best priority-based channel programming technique for particular industries by analyzing its advantages and drawbacks [19]. The ultimate objective is to support the creation of IWSN communication techniques that are more effective and dependable.

2.4: Route Discovery in Industrial Wireless Sensor Networks: Approaches and Adaptations

Industrial wireless networks of sensors (IWSNs) rely heavily on route discovery algorithms to provide efficient and dependable data transfer in dynamic industrial contexts [20]. This paper examines the various route discovery techniques while highlighting how easily they may be tailored to meet the unique requirements of industrial environments [21]. The research assesses the suitability of conventional routing algorithms for IWSNs with respect to scalability, adaptation to changing topologies, in addition energy efficiency, including AODV (Ad hoc on-demand Duration Vector) as well as DSR (Dynamic Resource Routing) [22]. Furthermore, specialized modifications of these protocols made for industrial settings are examined, including methods for dealing with interference and challenging circumstances.



Fig. 2.4.1: Route Discovery in Industrial Wireless Sensor Networks

Additionally, this work investigates cutting-edge approaches to route finding in IWSNs, such as Geographic Traveling and Ant Population Optimization [23]. These methods use geospatial data or algorithms with biological inspiration to dynamically choose the best paths for the transmission of information.

2.5: Literature Gap

Priority-based Channeling Scheduling as well as Channel Discovery are just two examples of each of the components that are primarily discussed in the literature currently available on adaptable communication techniques for industrial wireless networks of sensors. Deep investigations that combine both factors to offer an all-encompassing solution do not yet

exist, however, and this is a significant gap. To create reliable and effective methods of communication meant for the demanding requirements of manufacturing facilities, this gap must be filled.

CHAPTER 3: METHODOLOGY

Interpretivism places a strong emphasis on comprehending social issues via the viewpoints and interpretations of individuals [24]. This concept is relevant to the study of adaptive communication techniques for Industrial wireless sensor networks (IWSNs) because it permits the examination of individual experiences, thoughts, and interpretation of IWSN operational stakeholders. Deductive reasoning involves acquiring and examining data to confirm or disprove a theory or hypothesis [25]. In order to evaluate the efficiency of merged Priority-based Network Scheduling as well as Route Discovery in improving IWSN performance, a method known as deductive reasoning is used in this investigation. The research approach will be directed by the hypotheses and frameworks that already exist about these elements [26]. An accurate representation and comprehension of a phenomenon are the goals of a descriptive study design. The descriptive layout is used in this instance to fully define the operation, benefits, and difficulties connected with the combined communication methods in IWSNs [27]. Data from several sources must be gathered in order to provide a comprehensive and in-depth picture. Utilizing current information sources including academic papers, news accounts, technical manuals, and business magazines is known as secondary data collection [28]. This method is appropriate for this study because it enables a thorough analysis and synthesis of earlier research, conceptual frameworks, and real-world applications pertaining to Priority-based Channel Management and Route Identification in IWSNs [29]. Start by doing a thorough literature study with a focus on the most recent Priority-based Channel Scheduling especially Route Identification in IWSNs studies, papers, reports on technical subjects, and case studies [30]. This will serve as the deductive method's starting point. Create a conceptual structure based on the review of literature that incorporates Priority-based Channel Scheduling as well as Route Discovery to improve the effectiveness of IWSN communication. This structure will direct the deductive process. assemble secondary information from reliable sources [31]. Extract pertinent details on how the integrated communication tactics work, their advantages, and their difficulties. Prepare and combine this information for analysis. Analyze the gathered facts in the context of the predetermined theoretical framework using deductive reasoning [32]. Analyze the contribution of the integrated methods to improved IWSN performance. Draw inferences from the data, emphasizing how successful the integrated communication tactics were [33]. Give helpful suggestions for putting these techniques into practice and maximizing them in industrial contexts. This technical methodology intends to provide a thorough knowledge of the combined communication methods in IWSNs including their possible effects on manufacturing procedures by integrating interpretivism, a method of inference, a design based on description, and secondary data gathering.

CHAPTER 4: RESULTS

4.1 Theme: Adaptive Communication Strategies in Dynamic Industrial Environments

Wireless communication systems face a variety of difficulties in dynamic industrial settings, especially when it comes to Industrial wireless sensing networks (IWSNs) [34]. These difficulties are brought on by things like quickly varying environmental conditions, intense radiation interference, as well as the presence of large equipment all of which have a big impact on how reliable and effective data transmission is [35]. In these circumstances, adaptive communication techniques are essential because they allow IWSNs to dynamically modify how they act in response to changing circumstances. Priority-based Network Scheduling, which assigns resources in accordance with the significance of data packets, is a crucial component of flexibility [36]. This makes sure that crucial information is conveyed quickly despite interference as well as competing traffic. Adaptive techniques are also highly important in channel discovery [37]. These protocols adapt to altering network topologies as well as environmental factors by choosing the most effective paths for data transport.



Fig. 4.1.1: Adaptive Communication Strategies

The incorporation of adaptive techniques also takes into account the unique needs of dynamic industrial contexts. Traditional static protocols could find it difficult to handle the sudden shifts and unpredictability present in such environments [38]. Contrarily, adaptive communication solutions have the potential to greatly improve the functionality and dependability of IWSNs, ensuring uninterrupted communication in the face of difficult circumstances. These techniques have important ramifications for numerous industrial applications, too. The adoption of adaptive methods of communication can result in increased operational effectiveness, and decreased downtime, including enhanced security measures across production procedures and vital infrastructure monitoring.

4.2 Theme: Integration of Priority-based Channel Scheduling and Route Discovery

Among Industrial wireless sensor networks (IWSNs), the combined use of Priority-based Channel Management and Route Discovery is a key development in improving communication. By allocating wireless channel resources depending on the urgent nature of data, priority-based carrier scheduling makes sure that high-priority material is carried as quickly as possible [39]. By avoiding congestion and interference, this strategy improves the effectiveness of the entire network. In addition, Route Discovery helps identify the most effective route for data transmission. This technique adapts to the changing nature of industrial contexts by dynamically determining appropriate routes depending on current network

ADAPTIVE COMMUNICATION STRATEGIES FOR INDUSTRIAL WIRELESS SENSOR NETWORKS: PRIORITY-BASED CHANNEL SCHEDULING AND ROUTE DISCOVERY

Protocol/Standard	Spectrum Type	Frequency Band	Maximum Data Throughput	Coverage Range	Advantages	Disadvantages	Market Expected
ZigBee	Unlicensed	868 MHz, 915 MHz, 2.4 GHz	250 Kbps	Up to 100 m	Low cost, Low power usage, Low complexity	Low data rates, Short range, Interference with other technologies using 2.4 GHz band, Low battery power supply	Very High
Bluetooth	Unlicensed	2.4 GHz	2.1 Mbps	Up to 100 m	Low power usage	Low data rates, Very short range, Low security, Interference with other technologies using 2.4 GHz band	Very High
WiFi	Unlicensed	2.4 GHz, 5.8 GHz	3 Mbps to 300 Mbps	Up to 100 m	High data rates, Robust, Fair to peers and peers to multipoint communication, Low cost, IP support and network scalability	Complex design, Prone to interference, data rates may fluctuate due to interference or coexistence problems	Very High
Z-Wave	Unlicensed	868 MHz, 915 MHz	40 Kbps to 400 Kbps	Up to 300 m	Low power usage	Very Low data rates, Short range	Medium
WakeUpNet	Unlicensed	2.4 GHz	Up to 100 Kbps	300 m	Simple and low cost solution, More consistency of multiple networks, Keeps the back and white list of devices, Self-healing standard, More secure	All the devices operating on WakeUpNet must have waking capability, No broadcast on how the network is configured by network manager	Very high for industrial control applications
LoRaWAN	Unlicensed	868 MHz, 915 MHz, 2.4 GHz	Up to 100 Kbps	Up to 100 m	Low power usage	Low data rates, Short range	Medium
WirelessHART	Unlicensed	868 MHz, 915 MHz, 2.4 GHz	4.8 Kbps to 480 Kbps	Up to 300 m	Low power usage	Very Low data rates, Short range	Very low

Fig. 4.3.1: Comparative Analysis of Communication Protocols for IWSNs

Due to its long-range capacity, Lora WAN is well-suited for applications that need to span vast areas. However, due consideration must be given to its vulnerability to interference in some industrial environments [44].

Based on important factors including communication rate, assortment, electrical consumption, as well as adaptability to changing industrial situations, the comparison analysis rates these procedures [45]. Examining the advantages and disadvantages of each protocol will give you useful information for choosing the one that is best suited to your particular industrial application.

4.4 Theme: Impact Assessment on Industrial Processes and Applications

Numerous commercial applications and procedures are significantly impacted by the use of adaptive communication techniques, specifically Priority-based Network Scheduling as well as Route Discovery. The prompt transfer of crucial data is essential in production, where accuracy and efficiency are of the utmost importance [46]. Priority-based Stream Scheduling makes sure that vital information about the status of a production, quality assurance, and the condition of the equipment in question is transmitted immediately. As a result, production schedules are improved, downtime is decreased, and productivity finally rises [47]. The influence of adaptive communication tactics is even more noticeable in industries like energy and energy companies, where security and reliability are crucial. Potential risks can be quickly identified and dealt with by ranking essential data relating to system honesty and monitoring the environment, including responding to emergencies [48]. This not only guarantees adherence to legal requirements but also improves general safety precautions.

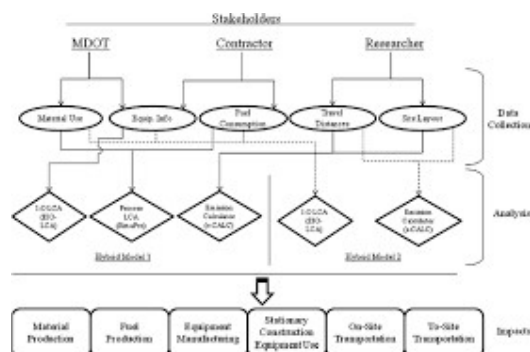


Fig. 4.4.1: Impact Assessment on Industrial Processes and Applications

Additionally, for effective procedures in logistics as well as supply chain administration, real-time monitoring and analysis are crucial [49]. When Route Discovery is integrated, data pathways may be dynamically adjusted, ensuring that data about inventory levels, delivery status, including demand projections efficiently reaches its intended audience [50]. Operations are streamlined, the expenses associated with carrying inventory are decreased, and customer satisfaction is increased as a result [51]. Furthermore, fast communication is essential in monitoring infrastructure programs, such as in intelligent cities or public transit systems, to guarantee the security and dependability of vital infrastructure components [52]. The quick transmission of information on travel patterns, structural integrity, as well as the outside environment is made possible by adaptive communication systems, allowing for timely maintenance as well as intervention.

CHAPTER 5: EVALUATION AND CONCLUSION

5.1: Critical Evaluation

A promising approach for boosting the effectiveness and dependability of communications across dynamic industrial situations is the study of adaptive communication techniques for Industrial wireless sensor networks (IWSNs). It is a praiseworthy strategy that Priority-based Channels Management and Route Discovery are combined since it takes into account the unique difficulties presented by industrial environments. It is crucial to recognize any potential drawbacks, though. The practical application of these integrated solutions may run into problems with scalability, resource limitations, and device compatibility. Furthermore, depending on the particular industrial situation, the efficiency of these tactics may change, needing thorough customization and evaluation. Furthermore, even though comparing communication protocols can reveal useful insights, it is important to understand that a variety of factors, such as network capacity, interference levels of difficulty, and application specifications, can affect how well a protocol performs. Therefore, thorough analysis in light of diverse real-world events is essential for drawing firm findings.

5.2 Research recommendation

Empirical Validation in Real-World Scenarios: To verify the efficacy of the combined communication techniques, thorough field trials including experiments within actual industrial settings are advised. This will give important information on how they operate in unpredictable and challenging situations.

Adaptation to Specific Industrial Contexts: It is crucial to adapt the integrated tactics to particular industrial environments [53]. The applicability and efficiency of the suggested methods of communication will be improved by taking into account elements like industry type, network dimension, and interfering levels.

Hardware Compatibility and Resource Optimization: For real-world implementation, it is essential to address compatibility with hardware concerns and maximize resource efficiency.

This includes making certain that the combined techniques can function effectively on a variety of sensor nodes with diverse capacities.

Security and Resilience Considerations: Given the importance of industrial operations, it is crucial to include strong security safeguards and resilience methods. This will protect the connectivity infrastructure from any online threats and guarantee continuous operation under difficult circumstances.

Scalability and Future-Proofing: The integrative strategies' lifespan and usefulness in continuously changing corporate landscapes will be increased by evaluating their ability to grow and planning them with possible future developments in mind.

Cost-Benefit Analysis: Evaluating the economic viability of executing the suggested communication techniques will help with an extensive cost-benefit analysis [54]. This entails taking into account variables including the price of initial deployment, ongoing costs, and prospective returns on investments.

Industry Collaboration and Stakeholder Engagement: Collaboration with business partners and including customers in the investigation procedure can produce useful, actionable insights and guarantee that the coordinated approaches meet the needs and specifications of the business.

5.3 Future work

Dynamic Protocol Adaptation: Exploring adaptive communication systems that can change settings on the fly in response to shifting network dynamics including environmental variables. This might entail creating self-improving algorithms that change continuously to improve communication efficiency.

Machine Learning Integration: Investigating the use of machine learning methods to improve protocols for communicating decision-making processes. This can entail using predictive algorithms to foresee congestion in the networks or adaptively modifying the level of priority based on prioritization results.

Energy-Efficient Strategies: Investigating cutting-edge battery management methods to be used in IWSNs or technologies for energy harvesting to be used in order to optimize the usage of energy in IWSNs.

Security and Resilience Enhancement: Improving communication security with sophisticated encryption techniques and detection of intrusion systems [55]. Likewise, researching ways to maintain network toughness in facing the threat of cyber-physical assaults or harsh weather circumstances.

Real-Time Adaptation Mechanisms: Investigating the processes that allow communication methods to be changed in real-time, ensuring prompt reactions to the constantly shifting industrial situations.

Cross-Industry Applicability: Extending the study to look at how integrated communication techniques can be adopted and modified across different industrial sectors, taking into account the particular needs and difficulties of each.

REFERENCES

- [1] Gnanasekar, V., Manohar, S.S. and Kumaran, M.S., 2019. Priority-based Channel Scheduling and Route Discovery for IWSN Applications. *Journal of Information Science & Engineering*, 35(4).
- [2] Thalagondapati, V. and Singh, M.P., 2023. A self-organized priority-based MAC protocol in wireless sensor networks based on SDR-RHSO optimal relay node selection and HL-ANN wake-up scheduling. *Journal of Ambient Intelligence and Humanized Computing*, 14(8), pp.11093-11102.
- [3] Dhablya, D., Soundararajan, R., Selvarasu, P., Balasubramaniam, M.S., Rajawat, A.S., Goyal, S.B., Raboaca, M.S., Mihaltan, T.C., Verma, C. and Suciu, G., 2022. Energy-efficient network protocols and resilient data transmission schemes for wireless sensor Networks—An experimental survey. *Energies*, 15(23), p.8883.
- [4] Chenthil, T.R. and Jayarin, P.J., 2022, March. Energy-Aware QoS Based Cluster Routing With Aggregation Management Algorithm in Underwater Wireless Sensor Network. In *2022 International Conference on Communication, Computing and Internet of Things (IC3IoT)* (pp. 1-6). IEEE.
- [5] Gurupriya, M. and Sumathi, A., 2023. Multi-Faceted Clustering with Enhanced Multi-channel Allocation for Optimal Path Selection in Wireless Sensor Networks. *Wireless Personal Communications*, 129(1), pp.95-118.
- [6] Singh, J., Kaur, R. and Singh, D., 2020. A survey and taxonomy on energy management schemes in wireless sensor networks. *Journal of Systems Architecture*, 111, p.101782.
- [7] Raut, A.R. and Khandait, S.P., An intelligent MAC protocol for mission critical applications in wireless sensor networks. *Concurrency and Computation: Practice and Experience*, p.e7813.
- [8] Jadhav, S. and Jadhav, S., 2021. An organized study of congestion control approaches in wireless sensor networks. In *Future trends in 5G and 6G: Challenges, architecture, and applications* (pp. 1-23). CRC Press.
- [9] Pandey, D. and Kushwaha, V., 2020. An exploratory study of congestion control techniques in wireless sensor networks. *Computer Communications*, 157, pp.257-283.
- [10] Sakib, A.N., Driberg, M., Sarang, S., Aziz, A.A., Hang, N.T.T. and Stojanović, G.M., 2022. Energy-aware QoS MAC protocol based on prioritized-data and multi-hop routing for wireless sensor networks. *Sensors*, 22(7), p.2598.
- [11] Manoharan, G. and Sumathi, A., 2022. Efficient routing and performance amelioration using Hybrid Diffusion Clustering Scheme in heterogeneous wireless sensor network. *International Journal of Communication Systems*, 35(15), p.e5281.
- [12] Sandhiyaa, S. and Gomathy, C., 2023. Localization and Priority-Based Multi-objective QoS Congestion Control Routing for Underwater Wireless Sensor Network.

- [13] Nguyen, M.T., Nguyen, C.V., Do, H.T., Hua, H.T., Tran, T.A., Nguyen, A.D., Ala, G. and Viola, F., 2021. Uav-assisted data collection in wireless sensor networks: A comprehensive survey. *Electronics*, 10(21), p.2603.
- [14] Patel, R.N. and Bhatt, N.V., 2021. TRIPLEPR-MAC: A Triple Queue Priority Based Medium Access Control Protocol for Wireless Sensor Network. *International Journal of Sensors Wireless Communications and Control*, 11(1), pp.114-134.
- [15] Xu, H. and Yuan, X., 2023. Cross-Layer Design for Energy-Efficient Reliable Multi-Path Transmission in Event-Driven Wireless Sensor Networks. *Sensors*, 23(14), p.6520.
- [16] Kaur, T. and Kumar, D., 2019. QoS mechanisms for MAC protocols in wireless sensor networks: a survey. *IET Communications*, 13(14), pp.2045-2062.
- [17] Ramesh, P.S., Srivani, P., Mahdal, M., Sivaranjani, L., Abidin, S., Kagi, S. and Elangovan, M., 2023. Contextual Cluster-Based Glow-Worm Swarm Optimization (GSO) Coupled Wireless Sensor Networks for Smart Cities. *Sensors*, 23(14), p.6639.
- [18] Luo, J., Chen, Y., Wu, M. and Yang, Y., 2021. A survey of routing protocols for underwater wireless sensor networks. *IEEE Communications Surveys & Tutorials*, 23(1), pp.137-160.
- [19] Venugopal, K.R., Shiv Prakash, T. and Kumaraswamy, M., 2020. *QoS Routing Algorithms for Wireless Sensor Networks* (pp. 1-165). Springer.
- [20] UZOUGBO, O.I., 2021. *ENHANCED PRIORITY-BASED ADAPTIVE ENERGY-AWARE MECHANISMS FOR WIRELESS SENSOR NETWORKS* (Doctoral dissertation, Universiti Teknologi Malaysia).
- [21] Munusamy, N., Vijayan, S. and Ezhilarasi, M., 2021. Role of Clustering, Routing Protocols, MAC protocols and Load Balancing in Wireless Sensor Networks: An Energy-Efficiency Perspective. *Cybernetics and Information Technologies*, 21(2), pp.136-165.
- [22] Abdullah, S., Asghar, M.N., Fleury, M. and Mushtaq, Z., 2023. Network-Coding-Enabled and QoS-Aware Message Delivery for Wireless Sensor Networks. *Wireless Personal Communications*, pp.1-31.
- [23] Jawwharlal, R. and Devi, L.N., 2022. Quality and Energy Aware Multipath Routing in Wireless Multimedia Sensor Networks. *Journal of Communications*, 17(8).
- [24] Sarang, S., Stojanović, G.M., Stankovski, S., Trpovski, Ž. and Driberg, M., 2020. Energy-efficient asynchronous QoS MAC protocol for wireless sensor networks. *Wireless Communications and Mobile Computing*, 2020, pp.1-13.
- [25] Wajgi, D.W. and Tembhrne, J.V., 2023. Localization in wireless sensor networks and wireless multimedia sensor networks using clustering techniques. *Multimedia Tools and Applications*, pp.1-51.
- [26] Angurala, M., Bala, M. and Khullar, V., 2022. A survey on various congestion control techniques in wireless sensor networks. *International Journal on Recent and Innovation Trends in Computing and Communication*, 10(8), pp.47-54.
- [27] Kori, G.S. and Kakkasageri, M.S., 2023. Classification and regression tree (cart) based resource allocation scheme for wireless sensor networks. *Computer Communications*, 197, pp.242-254.
- [28] Faheem, M., Butt, R.A., Ali, R., Raza, B., Ngadi, M.A. and Gungor, V.C., 2021. CBI4. 0: A cross-layer approach for big data gathering for active monitoring and maintenance in the manufacturing industry 4.0. *Journal of Industrial Information Integration*, 24, p.100236.

- [29] Roberts, M.K. and Ramasamy, P., 2023. An improved high performance clustering based routing protocol for wireless sensor networks in IoT. *Telecommunication Systems*, 82(1), pp.45-59.
- [30] Sankayya, M., Sakthivel, R.K., Gayathri, N. and Al-Turjman, F., 2021. Wireless sensor network-based delay minimization framework for IoT applications. *Personal and Ubiquitous Computing*, pp.1-9.
- [31] Jatothu, R., Lal, J.D., Bhavani, N.P.G., Sharada, K.A., Balraj, E., Vaigandla, K.K., Shukla, A.K., Ishrat, M. and Sahile, K., 2022. End-to-End Latency Analysis for Data Transmission via Optimum Path Allocation in Industrial Sensor Networks. *Wireless Communications and Mobile Computing*, 2022.
- [32] Chaudhari, S., 2021. A survey on multipath routing techniques in wireless sensor networks. *International Journal of Networking and Virtual Organisations*, 24(3), pp.267-328.
- [33] Dhandapani, A., Venkateswari, P., Sivakumar, T., Ramesh, C. and Vanitha, P., 2022. Cooperative self-scheduling routing protocol based IOT communication for improving life time duty cycled energy efficient protocol in SDN controlled embedded network. *Measurement: Sensors*, 24, p.100475.
- [34] Lin, D., Wang, Q., Min, W., Xu, J. and Zhang, Z., 2020. A survey on energy-efficient strategies in static wireless sensor networks. *ACM Transactions on Sensor Networks (TOSN)*, 17(1), pp.1-48.
- [35] Shyama, M., Pillai, A.S. and Anpalagan, A., 2022. Self-healing and optimal fault tolerant routing in wireless sensor networks using genetical swarm optimization. *Computer Networks*, 217, p.109359.
- [36] Kamble, A.A. and Patil, B.M., 2021. Systematic analysis and review of path optimization techniques in WSN with mobile sink. *Computer Science Review*, 41, p.100412.
- [37] Arafat, M.Y., Habib, M.A. and Moh, S., 2020. Routing protocols for UAV-aided wireless sensor networks. *Applied Sciences*, 10(12), p.4077.
- [38] Jenila, L. and Canessane, R.A., 2023. Cross Layer based Energy Aware and Packet Scheduling Algorithm for Wireless Multimedia Sensor Network. *INTERNATIONAL JOURNAL OF COMPUTERS COMMUNICATIONS & CONTROL*, 18(2).
- [39] Bouhamed, O., Ghazzai, H., Besbes, H. and Massoud, Y., 2020. A UAV-assisted data collection for wireless sensor networks: Autonomous navigation and scheduling. *IEEE Access*, 8, pp.110446-110460.
- [40] Chiwariro, R. and . N, T., 2022. Quality of service aware routing protocols in wireless multimedia sensor networks: survey. *International Journal of Information Technology*, 14(2), pp.789-800.
- [41] Kaur, T. and Kumar, D., 2019. Computational intelligence-based energy efficient routing protocols with QoS assurance for wireless sensor networks: a survey. *International Journal of Wireless and Mobile Computing*, 16(2), pp.172-193.
- [42] Yadav, S.L., Ujjwal, R.L., Kumar, S., Kaiwartya, O., Kumar, M. and Kashyap, P.K., 2021. Traffic and energy aware optimization for congestion control in next generation wireless sensor networks. *Journal of Sensors*, 2021, pp.1-16.
- [43] Almuntaheri, S. and Alenazi, M.J., 2022. Software-Defined Network-Based Energy-Aware Routing Method for Wireless Sensor Networks in Industry 4.0. *Applied Sciences*, 12(19), p.10073.

- [44] Patil, S.A. and Gokhale, P.K., 2022. AI-federated novel delay-aware link-scheduling for Industry 4.0 applications in IoT networks. *International Journal of Pervasive Computing and Communications*, (ahead-of-print).
- [45] Mahendran, N., Shankar, S. and Mekala, T., 2020. EMA-PRBDS: Efficient multi-attribute packet rank based data scheduling in wireless sensor networks for real-time monitoring systems. *International Journal of Electronics*, 107(6), pp.879-898.
- [46] Mahendran, N., Shankar, S. and Mekala, T., 2020. EMA-PRBDS: Efficient multi-attribute packet rank based data scheduling in wireless sensor networks for real-time monitoring systems. *International Journal of Electronics*, 107(6), pp.879-898.
- [47] Naji, N., Abid, M.R., Krami, N. and Benhaddou, D., 2021. Energy-Aware Wireless Sensor Networks for Smart Buildings: A Review. *Journal of Sensor and Actuator Networks*, 10(4), p.67.
- [48] Lopez-Ardao, J.C., Rodriguez-Rubio, R.F., Suarez-Gonzalez, A., Rodriguez-Perez, M. and Sousa-Vieira, M.E., 2021. Current trends on green wireless sensor networks. *Sensors*, 21(13), p.4281.
- [49] Akbar, M.S., Hussain, Z., Sheng, M. and Shankaran, R., 2022. Wireless body area sensor networks: Survey of mac and routing protocols for patient monitoring under iee 802.15. 4 and iee 802.15. 6. *Sensors*, 22(21), p.8279.
- [50] Jatothu, R., Lal, J.D., Bhavani, N.P.G., Sharada, K.A., Balraj, E., Vaigandla, K.K., Shukla, A.K., Ishrat, M. and Sahile, K., 2022. Research Article End-to-End Latency Analysis for Data Transmission via Optimum Path Allocation in Industrial Sensor Networks.
- [51] Temene, N., Sergiou, C., Georgiou, C. and Vassiliou, V., 2022. A survey on mobility in wireless sensor networks. *Ad Hoc Networks*, 125, p.102726.
- [52] Kapoor, V. and Singh, D., 2023. FBESSM: An Fuzzy Based Energy Efficient Sleep Scheduling Mechanism for Convergecast in Wireless Sensor Networks. *International Journal of Intelligent Systems and Applications in Engineering*, 11(9s), pp.767-781.
- [53] Nurlan, Z., Zhukabayeva, T., Othman, M., Adamova, A. and Zhakiyev, N., 2021. Wireless sensor network as a mesh: Vision and challenges. *IEEE Access*, 10, pp.46-67.
- [54] Jagan, G.C. and Jesu Jayarin, P., 2022. Wireless sensor network cluster head selection and short routing using energy efficient ElectroStatic discharge algorithm. *Journal of Engineering*, 2022, pp.1-10.
- [55] Rahiminasab, A., Tirandazi, P., Ebadi, M.J., Ahmadian, A. and Salimi, M., 2020. An energy-aware method for selecting cluster heads in wireless sensor networks. *Applied Sciences*, 10(21), p.7886.